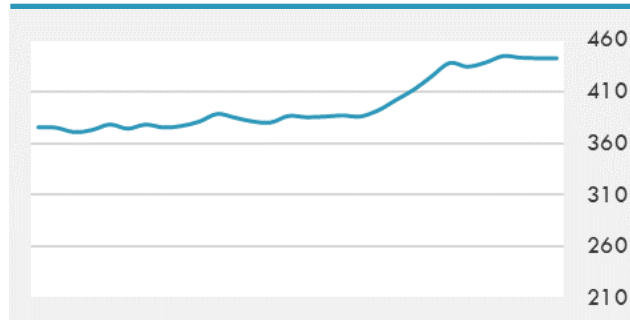
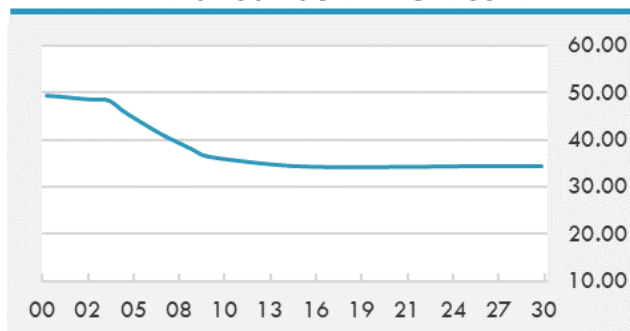


BEIRUT STOCK EXCHANGE

	Last	Daily %	YTD %	Dividend %
MSCI Lebanon	442.38	-0.12%	1.06%	
Development and Reconstruction				
Solidere A	18.75	0.00%	1.35%	
Solidere B	18.32	-0.49%	0.16%	
Banking				
Audi Listed	1.21	0.83%	-0.82%	
BLC Listed	0.93	0.00%	0.00%	
BOB Listed	17.8	0.00%	0.00%	
Byblos Listed	0.5	0.00%	-5.66%	
BEMO Listed	1.2	0.00%	0.00%	
BLOM Listed	2.07	0.00%	0.00%	
Trading				
RYMCO	3.19	0.00%	0.00%	
Industrial				
Holcim	13.13	0.00%	-9.45%	
Ciments Blancs	4.1	0.00%	0.00%	

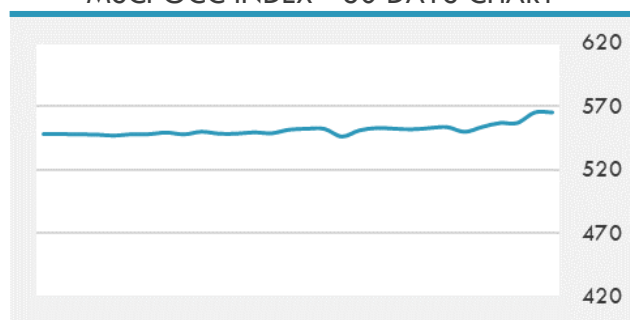
MSCI LEBANON INDEX - 30 DAYS CHART

LEBANESE USD SOVEREIGN CURVE


- The Tadawul All Share Index closed Monday's trading session on a positive note after rising by 0.59% or 52.42 points to 8,869.47 points, hitting its highest level since July 2019.
- Dubai is expected to witness a 4% year-on-year (YoY) growth in consumption and demand levels in its household consumption sector during 2021, the Dubai media office reported.
- The CEO of Emaar Malls, Rajiv Suri, has resigned from his position with immediate effect, according to the company's disclosure to the Dubai Financial Market on Tuesday.

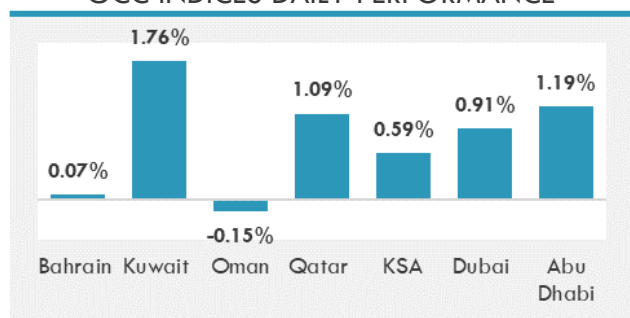
Source: Daily Star, Gulf Business, Mubasher, Bloomberg, Businessnews LB

GCC EQUITY INDICES

	Last Price	Daily %	YTD %
Bahrain	1453.09	0.07%	-2.52%
Kuwait	5619.28	1.76%	1.60%
Oman	3725.35	-0.15%	1.33%
Qatar	10842.99	1.09%	3.51%
KSA	8869.47	0.59%	2.07%
Dubai	2698.68	0.91%	8.61%
Abu Dhabi	5237.48	1.19%	3.67%

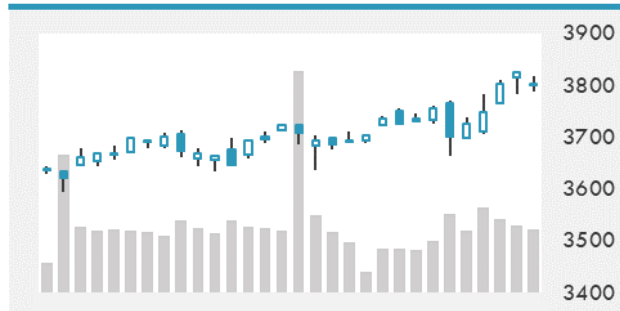
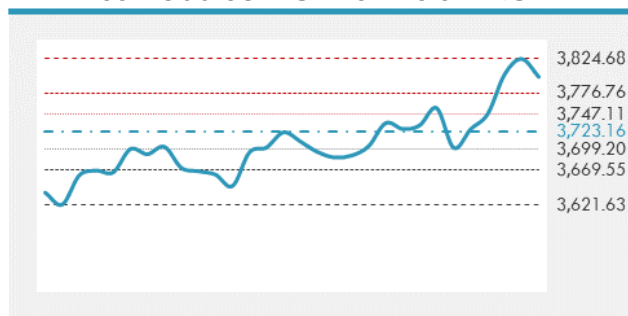
MSCI GCC INDEX - 30 DAYS CHART

LOCAL/GCC FOREIGN EXCHANGE

	Cross	Last Price
Lebanese Pound Spot	USD/LBP	1515.5
Bahraini Dinar Spot	USD/BHD	0.37699
Kuwaiti Dinar Spot	USD/KWD	0.30335
Omani Rial Spot	USD/OMR	0.38499
Qatari Riyal Spot	USD/QAR	3.6415
Saudi Riyal Spot	USD/SAR	3.7517
UAE Dirham Spot	USD/AED	3.673

GCC INDICES DAILY PERFORMANCE


UNITED STATES EQUITY MARKET INDICES

	Last Price	Daily %	YTD %	Δ10D Vol
Major Indices				
Dow Jones	31008.69	0.00%	1.31%	0.21%
S&P 500	3799.61	0.00%	1.16%	0.61%
Nasdaq	13036.43	0.00%	1.15%	1.64%
Sectors Indices				
Discretionary	1327.00	0.00%	1.88%	4.23%
Staples	683.41	0.00%	-1.85%	-0.14%
Energy	317.86	0.00%	11.09%	-1.29%
Financials	515.43	0.00%	5.10%	0.02%
Healthcare	1375.46	0.00%	3.89%	-0.15%
Industrials	757.35	0.00%	1.04%	0.04%
IT	2279.54	0.00%	-0.51%	-0.22%
Materials	481.6	0.00%	5.68%	-0.44%
Com. Services	217.41	0.00%	-2.03%	-0.33%
Utilities	314.05	0.00%	-1.57%	0.66%
Real Estate	218.4	0.00%	-4.17%	0.64%

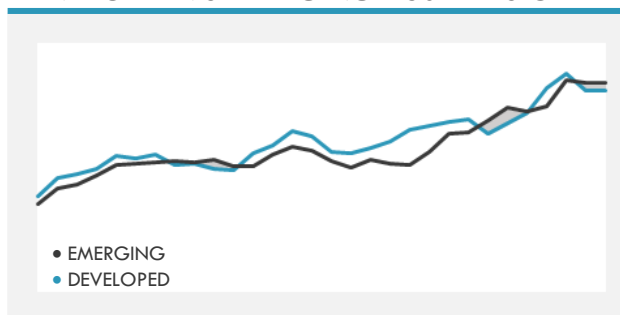
S&P 500 INDEX - 30 DAYS CHART

S&P 500 SUPPORT & RESISTANCE


- The S&P 500 fell from a record high, closing lower for the first time in five trading sessions as investors assessed the market's high valuations and looked ahead to the start of the corporate earnings season this week.
- European stocks retreated as traders assessed valuations following a rally that pushed shares near a 10-month high, with cyclical sectors leading the drop.
- Asian stocks were mixed on Tuesday, with the regional benchmark fluctuating as investors weighed the latest developments on the coronavirus spread in areas around the region.

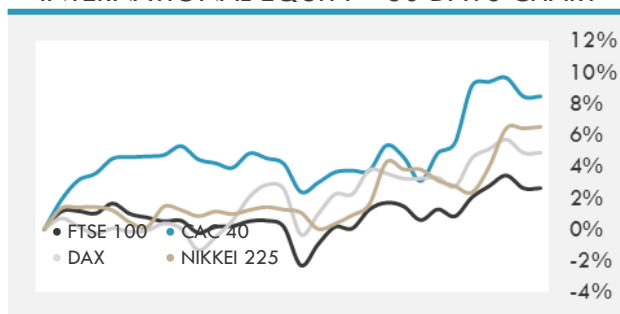
Source: Bloomberg, Financial Times, Reuters

INTERNATIONAL MARKETS INDICES

	Last Price	Daily %	YTD %	Δ10D Vol
World	1608.38	0.00%	1.89%	2.15%
Developed	2730.05	0.00%	1.49%	1.98%
Emerging	1349.6	0.00%	4.52%	1.16%
Frontier	2658.78	0.00%	2.58%	-0.03%
Europe	135.37	0.00%	2.48%	1.06%
Latin America	2469.94	0.00%	0.74%	5.07%
Asia Pacific	207.26	0.00%	3.67%	0.72%

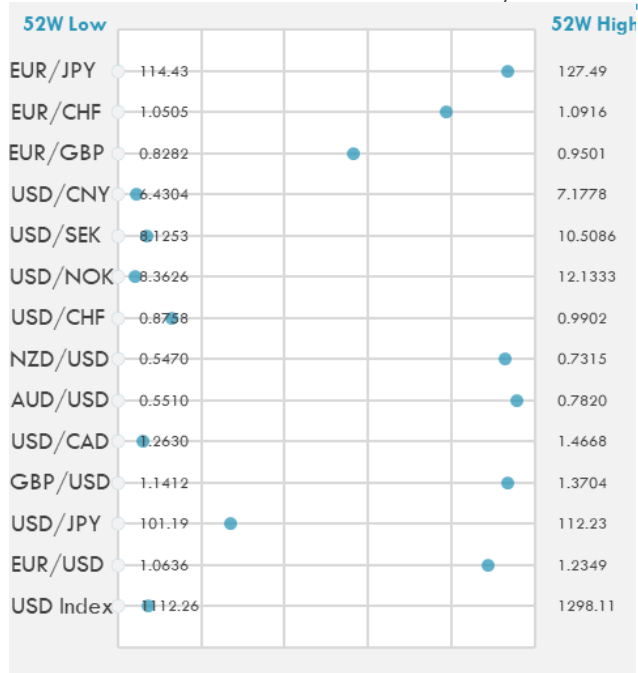
DEVELOPED VS EMERGING - 30 DAYS CHART

INTERNATIONAL EQUITY INDICES

	Last Price	Daily %	YTD %	Δ10D Vol
EuroStoxx 50	3620.62	0.00%	1.91%	0.48%
FTSE 100	6798.48	0.00%	5.23%	1.71%
CAC 40	5662.43	0.00%	2.00%	0.28%
DAX	13936.66	0.00%	1.59%	0.84%
Swiss SMI	10870.42	0.00%	1.56%	-0.14%
Nikkei 225	28164.34	0.09%	2.62%	0.00%
CSI 300	5586.26	2.67%	7.20%	3.33%

INTERNATIONAL EQUITY - 30 DAYS CHART


FOREIGN EXCHANGE MARKET

	Last Price	Daily %	Δ10D	Vol 25	ΔRR
Major USD Cross Rate					
USD Index	1126.08	-0.09%	-0.34%	-	
EUR/USD	1.2157	0.05%	-0.56%	-0.365	
USD/JPY	104.18	-0.08%	-0.56%	-0.048	
GBP/USD	1.3551	0.24%	-1.84%	-0.410	
USD/CAD	1.2754	-0.23%	-0.36%	0.320	
AUD/USD	0.7715	0.23%	-1.43%	-1.040	
NZD/USD	0.7184	0.29%	-0.72%	-0.865	
USD/CHF	0.8907	0.04%	-0.43%	0.173	
USD/NOK	8.5179	-0.22%	-1.01%	1.378	
USD/SEK	8.2895	-0.19%	0.10%	0.498	
USD/CNY	6.4632	-0.28%	0.09%	-0.050	
Major EUR Cross Rate					
EUR/GBP	0.89713	-0.21%	-0.28%	0.353	
EUR/CHF	1.08278	0.09%	0.01%	0.263	
EUR/JPY	126.65	-0.03%	0.00%	-0.273	

DISTANCE FROM 52 WEEKS LOW/HIGH


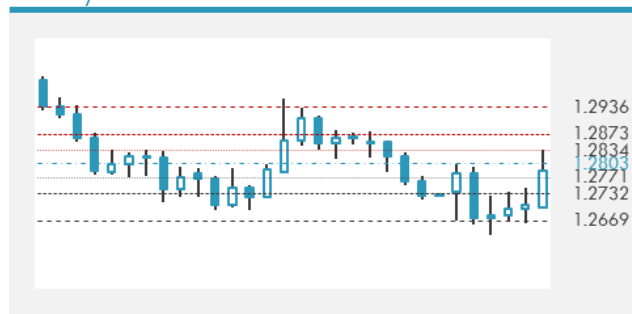
- The dollar reversed an early gain as Treasury yields steadied near their highest since March.
- Australia's dollar reversed an earlier loss as a stronger offshore yuan lent support to the currency.
- The Canadian dollar rallied while the greenback reversed an earlier advance.

Source: Bloomberg, Financial Times, Reuters

EUR/USD 30 DAYS SUPPORT & RESISTANCE

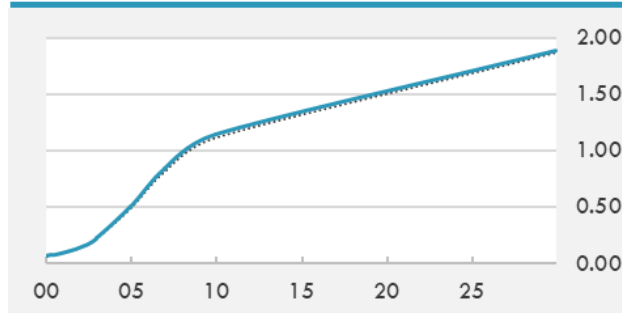
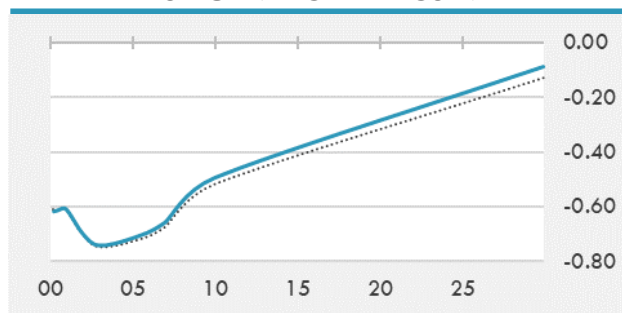
GBP/USD 30 DAYS SUPPORT & RESISTANCE

USD/JPY 30 DAYS SUPPORT & RESISTANCE

USD/CAD 30 DAYS SUPPORT & RESISTANCE


GLOBAL BOND INDICES

	Yield	ΔYield (in Bps)
Benchmark Indices		
US 10 Years Benchmark	1.146	0.031
EU 10 Years Benchmark	-0.496	0.023
UK 10 Years Benchmark	0.309	0.021
Sovereign Bonds		
US Treasury Bond	0.594	0
Eurozone Sovereign Bond	-0.428	0
Japan Sovereign Bond	-0.104	0
Corporate Bonds		
US Corporate TR	1.898	0.015
US High Yield Bond TR	4.221	0.057
EUR Aggregate Corporate TR	0.235	0.016
EUR High Yield TR	3.386	0.098
USD Emerging Market IG & HY	3.624	0.033

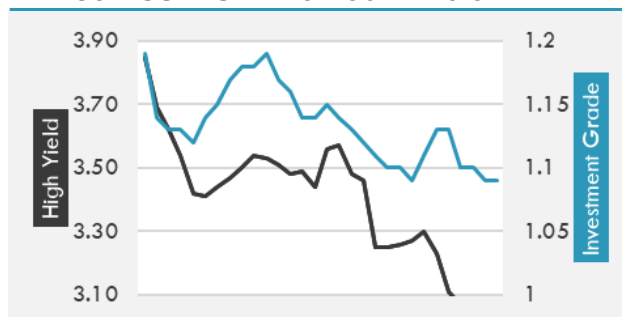
US TREASURIES YIELD CURVE

EUR GENERIC YIELD CURVE


- Treasuries are little changed after a choppy Asia session as early weakness is met with dip buying. Volumes are robust while very large option flows grab the market's attention.
- Japanese investors bought the biggest amount of U.K. sovereign bonds since 2014 in November, according to the latest balance-of-payments data from the Asian nation on Tuesday.
- Bunds bear steepen alongside core peers ahead of the Netherland's 30-year bond sale, Austria's 10-, 30-year auctions and an expected 10-year Belgian syndication Tuesday. Italian bonds slide along with stocks.

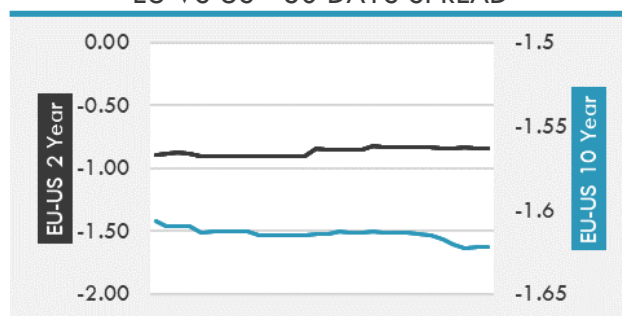
Source: Bloomberg, Financial Times, Economic times, Reuters

OVERNIGHT RATES - SWAPS

	Yield	ΔYield (in Bps)
3M USD LIBOR	0.224	0.000
3M EUR EURIBOR	-0.550	0.000
3M GBP LIBOR	0.027	0.000
3Y USD SWAP	0.300	0.006
5Y USD SWAP	0.578	0.020
10Y USD SWAP	1.150	0.025
30Y USD SWAP	1.625	0.008

USD CORPORATES - 30 DAYS SPREAD

FIXED INCOME SPREADS

	Spread	ΔSpread (in Bps)
USD 3M vs 10Y Spread	1.062	0.033
USD 2Y vs 10Y Spread	0.997	0.021
USD IG Spread	1.090	-0.010
USD HY Spread	3.070	0.030
EU vs US 10Y Spread	-1.627	0.008
EU vs US 2Y Spread	-0.842	-0.007
EM vs Benchmark Spread	280.300	1.200

EU VS US - 30 DAYS SPREAD


GLOBAL COMMODITIES MARKET

	Last Price	Daily %
Commodity Index	80.05	0.71%

Energy

WTI Crude Future	52.54	0.56%
Brent Crude Future	55.89	0.41%
NYMEX Gasoline	153.01	0.61%
NYMEX Heat Oil	158.18	0.53%
ICE Gasoil	450	0.95%
NYMEX Natural Gas	2.83	3.02%

Precious Metals

Gold Spot \$/Oz	1859.45	0.84%
Silver Spot \$/Oz	25.4615	2.20%
Platinum Spot \$/Oz	1066.51	2.99%
Palladium Spot \$/Oz	2381.78	0.53%
Gold Future	1858.9	0.44%
Silver Future	25.54	1.01%
Platinum Future	1069.4	2.37%
Palladium Future	2383	0.18%

Base Metals

LME Aluminum	2010	0.00%
LME Copper	7864	0.00%
LME Zinc	2768	0.00%
LME Nickel	17086	0.00%
LME Lead	1967	0.00%
LME Tin	20700	0.00%

Agricultural

Corn CBT	493	0.15%
Wheat CBT	638.5	0.59%
Soybeans CBT	1378.25	0.42%
Bean Meal CBT	445.7	-0.25%
Rough Rice CBT	12.58	0.00%
MDE Palm Oil	3788	-0.24%
Soybean CBT	42.74	0.26%
Coffee ICE	121.45	0.00%
Sugar #11 ICE	15.67	0.00%
Cotton #2 ICE	80.5	0.09%
Cocoa ICE	2480	0.00%
Ethanol CME	1.591	0.00%
Lumber CME	666.7	0.00%
Orange Juice ICE	122.25	0.00%
Live Cattle CME	113.4	0.00%
Feeder Cattle CME	136.9	0.00%
Lean Hogs CME	68.475	0.00%

COMMODITY INDEX SUPPORT & RESISTANCE

WTI OIL 30 DAYS SUPPORT & RESISTANCE


- Oil in New York climbed as the dollar declined, with the market assessing the potential for more supply after the International Energy Agency said a “big chunk” of U.S. shale is profitable at current prices.
- Gold climbed, snapping the longest run of daily declines since November.

Source: Bloomberg, Reuters

GOLD 30 DAYS SUPPORT & RESISTANCE

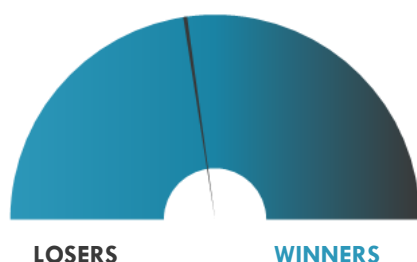
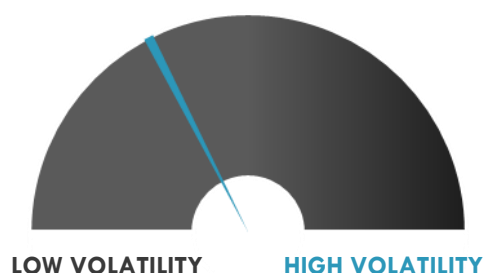
SILVER 30 DAYS SUPPORT & RESISTANCE


TOP 10 WINNERS

	Ticker	Last Price	Daily %
S&P 500 Stocks			
Eli Lilly and Co	LLY	185.94	+11.74%
Biogen Inc	BIIB	267.52	+5.93%
Walgreens Boots	WBA	47.7	+5.51%
General Motors Co	GM	45.01	+4.53%
Gap Inc/The	GPS	22.39	+4.53%
Cabot Oil & Gas Corp	COG	18.04	+4.46%
Etsy Inc	ETSY	183.04	+4.21%
Bristol-Myers Squibb Co	BMJ	64.97	+3.97%
Lennar Corp	LEN	75.88	+3.39%
Ford Motor Co	F	9.3	+3.33%

TOP 10 LOSERS

	Ticker	Last Price	Daily %
S&P 500 Stocks			
Tesla Inc	TSLA	811.19	-7.82%
Twitter Inc	TWTR	48.18	-6.41%
DexCom Inc	DXCM	370.64	-4.50%
Universal Health	UHS	135.12	-4.27%
DXC Technology Co	DXC	28.39	-4.09%
Facebook Inc	FB	256.84	-4.01%
Simon Property Group	SPG	83.14	-3.87%
Albemarle Corp	ALB	177.29	-3.70%
American Tower Corp	AMT	214.92	-3.28%
Regency Centers Corp	REG	44.02	-3.23%

S&P 500 DISTRIBUTION

S&P VOLATILITY INDEX


- T2 Biosystems +36.8% post-market after saying its T2SARS-CoV-2 Panel is capable of detecting multiple variants of the COVID-19 virus most recently identified in the U.K., South Africa and the U.S.
- Pixelworks and TCL sign a new multi-year collaboration agreement to leverage Pixelworks display innovations in future smartphone models across a wider range of price points.
- Fluor +4.1% pre-market after saying it won a cost-reimbursable development agreement from the Utah Associated Municipal Power Systems to provide estimating, development, design and engineering services for its Carbon-Free Power Project.
- Matson is up 7% after-market as it reports preliminary 4Q20 results; expects net income to be \$76.1M to \$81.6M and diluted EPS \$1.74 to be \$1.87 vs. \$1.11 consensus.
- ANGI Home Services is up 2.1% postmarket after IAC's monthly metrics for December showed several double-digit increases for the service provider.
- Signal Advance Inc. more than quintupled today after Tesla's Elon Musk tweeted on Thursday to "use Signal," referencing the secure messaging service. Signal Advance is not related to the Signal that Musk tweeted about.
- Lemonade sinks 5.6% in after-hours trading after announcing plans to offer 3M shares of common stock in a public offering.
- RedHill Biopharma entered into an underwriting agreement with H.C. Wainwright wherein the underwriter agreed to purchase on a firm commitment basis 1.28M ADSs at \$7.84/ADS.

KEY ECONOMIC INDICATORS

Country	Event	Surv (M)	Actual	Prior	Time
China	Money Supply M2 YoY	10.70%	--	10.70%	
China	New Yuan Loans CNY	1.25E+12	--	1.43E+12	
China	Money Supply M1 YoY	10.20%	--	10.00%	
China	Money Supply M0 YoY	10.40%	--	10.30%	
Finland	Current Account Balance	--	-9.00E+07	5.40E+08	8:00
Ireland	Industrial Production MoM	--	--	0.00%	13:00
Ireland	New Vehicle Licences	--	--	3421	13:00
Japan	BoP Current Account Balance	1.55E+12	1.88E+12	2.14E+12	1:50
Japan	Eco Watchers Survey Current SA	36.8	35.5	45.6	7:00
Japan	Eco Watchers Survey Outlook SA	30.5	37.1	36.5	7:00
Japan	Trade Balance BoP Basis	4.75E+11	6.16E+11	9.71E+11	1:50
Japan	BoP Current Account Adjusted	2.00E+12	2.34E+12	1.98E+12	1:50
Japan	Bank Lending Incl Trusts YoY	--	6.20%	6.30%	1:50
Latvia	CPI YoY	--	--	-0.70%	13:00
Latvia	CPI MoM	--	--	-0.30%	13:00
Lithuania	PPI YoY	--	-7.90%	-8.30%	9:00
Lithuania	PPI MoM	--	1.50%	0.60%	9:00
Netherlands	CPI YoY	--	0.80%	0.80%	7:30
Netherlands	CPI MoM	--	-0.80%	-0.80%	7:30
United States	NFIB Small Business Optimism	100.2	--	101.4	13:00

Source: Bloomberg

Banque BEMO sal

Head Office - Private and Corporate Banking

Elias Sarkis Ave., Bemo Bldg , Ashrafieh - Lebanon
Tel: +961 1 200 505 Fax: +961 1 217 860

Research & Development research@bemobank.com

Elias Sarkis Ave., Bemo Bldg , Ashrafieh - Lebanon
Tel: +961 1 200 505 Fax: +961 1 217 860

Disclaimer:

This report is published for information purposes only. The information herein has been compiled from, or based upon sources considered to be reliable (Bloomberg, SeekingAlpha, DailyStar...), but we do not guarantee or assume responsibility for its completeness and accuracy. This document should not be construed as a solicitation to take part in any investment, or as constituting any representation or warranty on our part. This report is not to be relied upon in substitution for the exercise of specialists.

We may not have taken any steps to ensure that the securities referred to in this report are suitable for any particular investor. The investments and services contained or referred to herein are not purported to be exhaustive, any person considering an investment should seek specialist advice on the suitability of an investment.

Nothing in this report constitutes investment, legal, accounting or tax advice, or a representation that any investment or strategy is suitable or appropriate to your individual circumstances, or otherwise constitutes a personal recommendation. Clients understand that it is their responsibility to seek legal and/or tax advice regarding the legal and tax consequences of their investment transactions. The consequences of any action taken on the basis of information contained herein are solely the responsibility of the recipient.

Investment instruments are subject to risk, including possible loss of principal amount invested. Past performance should not be taken as an indication or guarantee of future performance, and no representation or warranty, express or implied, is made regarding future performance. The value of securities and financial instruments is subject to exchange rate fluctuation that may have a positive or adverse effect on the price or income of such securities or financial instruments. Some investments mentioned in this report may have a high level of volatility. High volatility investments may experience sudden and large falls in their value causing losses when that investment is realized. Some investments may not be readily realizable and it may be difficult to sell or realize those investments, similarly it may prove difficult to obtain reliable information about the value, or risks, to which such an investment is exposed.

This report may provide the addresses of websites or references. We have not reviewed any such site and takes no responsibility for the content contained therein. Such address or reference is provided solely for convenience and information. Accessing such website through this report shall be at the recipients own risk.