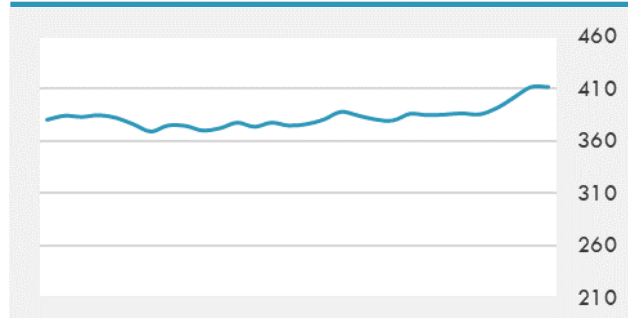
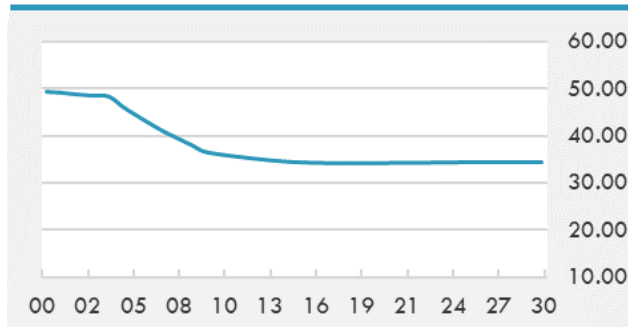


BEIRUT STOCK EXCHANGE

	Last	Daily %	YTD %	Dividend %
MSCI Lebanon	411.69	2.52%	52.68%	
Development and Reconstruction				
Solidere A	17.35	2.18%	137.67%	
Solidere B	17.35	3.58%	138.00%	
Banking				
Audi Listed	1.22	0.00%	-65.14%	
BLC Listed	0.93	0.00%	0.00%	
BOB Listed	17.8	0.00%	-5.32%	
Byblos Listed	0.54	3.85%	-46.00%	
BEMO Listed	1.2	0.00%	4.35%	
BLOM Listed	2.07	0.00%	-70.72%	
Trading				
RYMCO	3.19	0.00%	-2.74%	
Industrial				
Holcim	13.65	0.00%	40.00%	
Ciments Blancs	4	0.00%	53.85%	

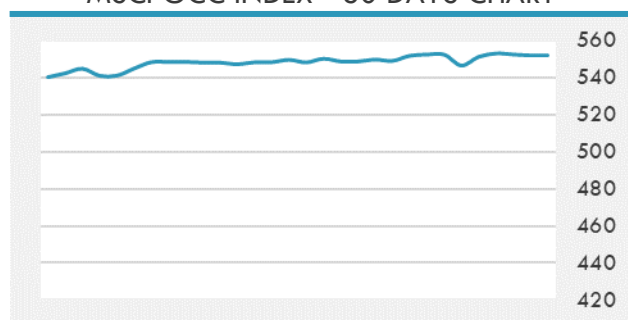
MSCI LEBANON INDEX - 30 DAYS CHART

LEBANESE USD SOVEREIGN CURVE


- Banque Saudi Fransi acquired the remaining 47 percent shares of Bank Audi's subsidiary in Syria for around \$25 million, a banking source said Monday.
- Ibn Roshd Educational Company has hired Alkhair Capital SA as a financial advisor for its initial public offering (IPO) on the Saudi Stock Exchange.
- The Tadawul All Share Index slid at the end of Monday's trading session by 0.29% or 25.28 points to settle at the level of 8,715.38 points.

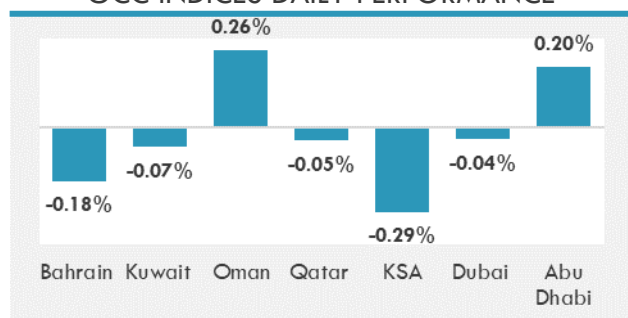
Source: Daily Star, Gulf Business, Mubasher, Bloomberg, Businessnews LB

GCC EQUITY INDICES

	Last Price	Daily %	YTD %
Bahrain	1490.16	-0.18%	-7.45%
Kuwait	5555.26	-0.07%	-11.41%
Oman	3624.54	0.26%	-8.96%
Qatar	10559.36	-0.05%	1.28%
KSA	8715.38	-0.29%	3.89%
Dubai	2514.6	-0.04%	-9.00%
Abu Dhabi	5106.31	0.20%	0.56%

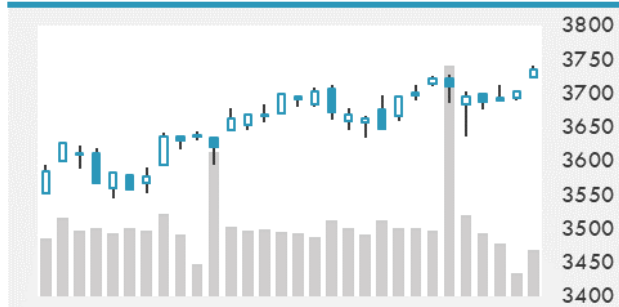
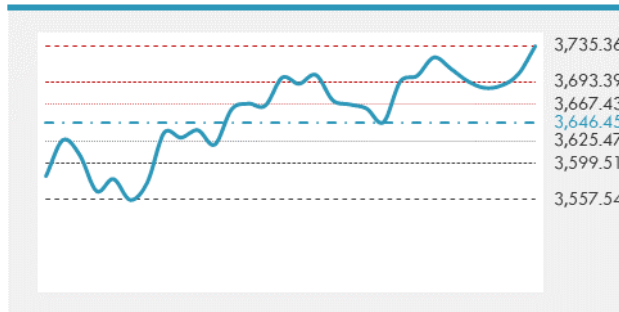
MSCI GCC INDEX - 30 DAYS CHART

LOCAL/GCC FOREIGN EXCHANGE

	Cross	Last Price
Lebanese Pound Spot	USD/LBP	1515.5
Bahraini Dinar Spot	USD/BHD	0.37704
Kuwaiti Dinar Spot	USD/KWD	0.3036
Omani Rial Spot	USD/OMR	0.385
Qatari Riyal Spot	USD/QAR	3.6414
Saudi Riyal Spot	USD/SAR	3.753
UAE Dirham Spot	USD/AED	3.6729

GCC INDICES DAILY PERFORMANCE


UNITED STATES EQUITY MARKET INDICES

	Last Price	Daily %	YTD %	Δ10D Vol
Major Indices				
Dow Jones	30403.97	0.00%	6.54%	-0.45%
S&P 500	3735.36	0.00%	15.62%	0.11%
Nasdaq	12899.42	0.00%	43.76%	0.22%
Sectors Indices				
Discretionary	1296.05	0.00%	31.41%	2.02%
Staples	693.29	0.00%	7.16%	0.73%
Energy	285.82	0.00%	-37.38%	-5.70%
Financials	483.77	0.00%	-5.40%	-2.35%
Healthcare	1303.37	0.00%	9.69%	-1.01%
Industrials	745.11	0.00%	8.36%	-2.39%
IT	2296.98	0.00%	42.57%	0.60%
Materials	448.83	0.00%	16.32%	-2.29%
Com. Services	221.75	0.00%	22.08%	4.80%
Utilities	312.77	0.00%	-4.75%	0.03%
Real Estate	225.83	0.00%	-6.03%	-0.30%

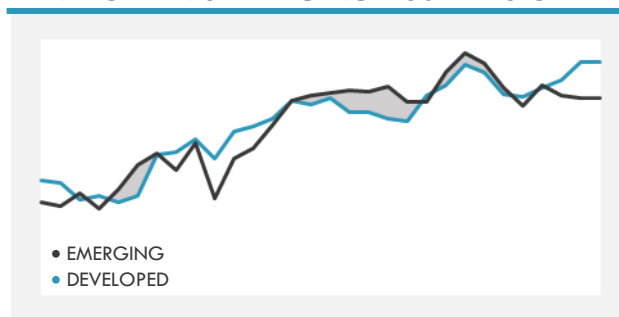
S&P 500 INDEX - 30 DAYS CHART

S&P 500 SUPPORT & RESISTANCE


- The S&P 500 climbed to a record high, extending a three-day advance after President Donald Trump signed a pandemic relief bill.
- European stocks rallied on Monday, sending Germany's DAX Index to a record high in the first trading session after the European Union and the U.K. reached a final agreement on Brexit terms.
- Asian stocks rose for a third day, helped by a rebound in Chinese internet stocks and bullish sentiment following the passage of a U.S. stimulus bill.

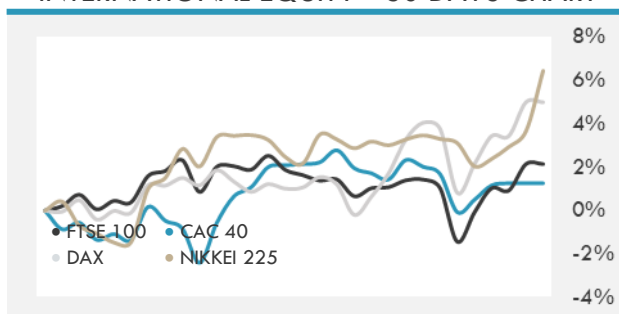
Source: Bloomberg, Financial Times, Reuters

INTERNATIONAL MARKETS INDICES

	Last Price	Daily %	YTD %	Δ10D Vol
World	1565.45	0.00%	13.35%	-0.68%
Developed	2676.8	0.00%	13.50%	-0.75%
Emerging	1252.33	0.00%	12.35%	-0.36%
Frontier	2570.08	0.00%	-6.63%	-0.36%
Europe	131.99	0.00%	-5.45%	0.19%
Latin America	2417.22	0.00%	-17.15%	-1.81%
Asia Pacific	194.95	0.00%	14.23%	-0.12%

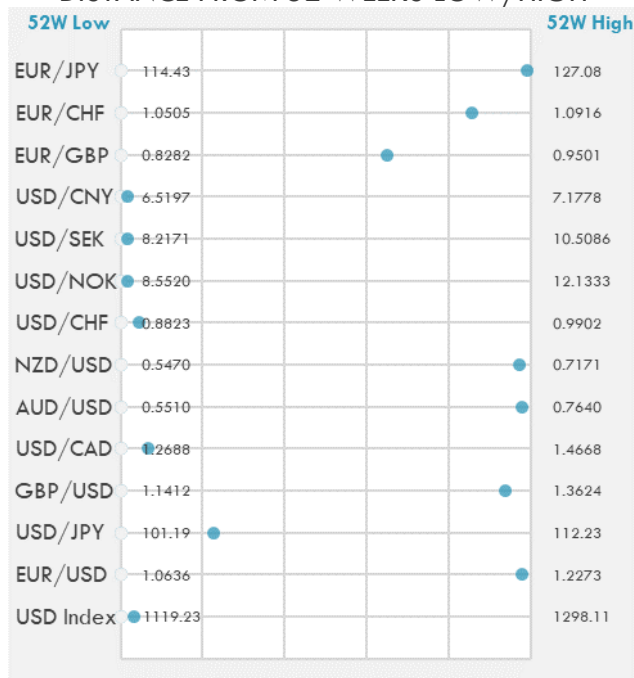
DEVELOPED VS EMERGING - 30 DAYS CHART

INTERNATIONAL EQUITY INDICES

	Last Price	Daily %	YTD %	Δ10D Vol
EuroStoxx 50	3575.41	0.00%	-4.53%	0.32%
FTSE 100	6502.11	0.00%	-13.79%	0.00%
CAC 40	5588.38	0.00%	-6.52%	1.05%
DAX	13790.29	0.00%	4.09%	-1.38%
Swiss SMI	10603.49	0.00%	-0.13%	2.78%
Nikkei 225	27577.15	2.69%	16.57%	0.78%
CSI 300	5055.79	-0.17%	23.41%	-0.08%

INTERNATIONAL EQUITY - 30 DAYS CHART


FOREIGN EXCHANGE MARKET

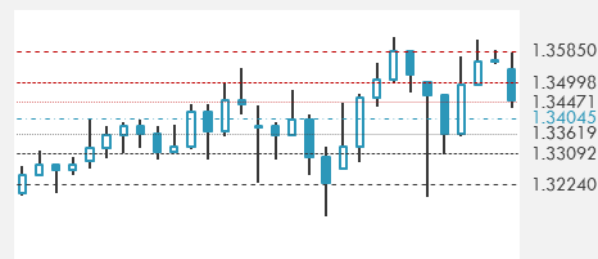
	Last Price	Daily %	Δ10D	Vol 25	ΔRR
Major USD Cross Rate					
USD Index	1124.82	-0.26%	-0.37%	-	
EUR/USD	1.2238	0.18%	-0.32%	-0.103	
USD/JPY	103.7	-0.11%	-0.13%	-0.428	
GBP/USD	1.3487	0.26%	-0.10%	-1.118	
USD/CAD	1.2823	-0.24%	0.19%	0.205	
AUD/USD	0.7596	0.22%	-0.01%	-0.678	
NZD/USD	0.7122	0.31%	-0.03%	-0.618	
USD/CHF	0.8872	-0.24%	0.30%	-0.100	
USD/NOK	8.6083	-0.32%	-0.15%	0.948	
USD/SEK	8.2579	-0.22%	-0.07%	0.513	
USD/CNY	6.5314	-0.09%	-0.02%	0.300	
Major EUR Cross Rate					
EUR/GBP	0.90738	-0.07%	0.03%	1.008	
EUR/CHF	1.08568	-0.02%	-0.20%	0.270	
EUR/JPY	126.95	0.10%	-0.07%	-0.425	

DISTANCE FROM 52 WEEKS LOW/HIGH


- The dollar declined against all of its Group-of-10 peers after the House passed a virus relief bill with \$2,000 payments championed by U.S. President Donald Trump.
- The yen is expected to remain in a tight range as year-end flows dictate trading.
- Emerging Asia currencies strengthened after the House of Representatives passed a bill boosting U.S. stimulus checks to \$2,000 from the original \$600.
- Australian and New Zealand dollars trade steady following a four-day weekend as liquidity dwindles heading into the year-end.

Source: Bloomberg, Financial Times, Reuters

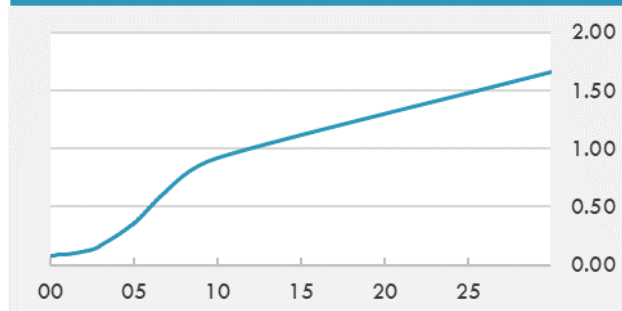
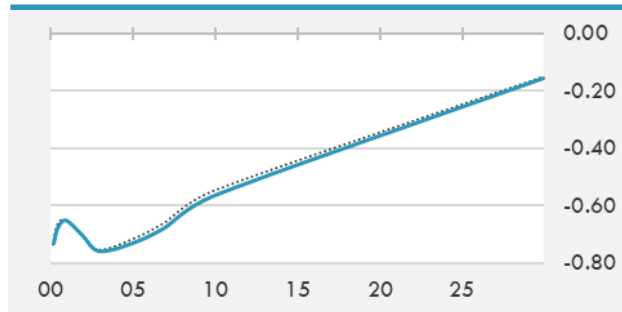
EUR/USD 30 DAYS SUPPORT & RESISTANCE

GBP/USD 30 DAYS SUPPORT & RESISTANCE

USD/JPY 30 DAYS SUPPORT & RESISTANCE

USD/CAD 30 DAYS SUPPORT & RESISTANCE


GLOBAL BOND INDICES

	Yield	ΔYield (in Bps)
Benchmark Indices		
US 10 Years Benchmark	0.9231	0.000
EU 10 Years Benchmark	-0.565	-0.017
UK 10 Years Benchmark	0.257	0.000
Sovereign Bonds		
US Treasury Bond	0.579	-0.002
Eurozone Sovereign Bond	-0.427	-0.026
Japan Sovereign Bond	-0.103	0.002
Corporate Bonds		
US Corporate TR	1.783	-0.013
US High Yield Bond TR	4.188	-0.189
EUR Aggregate Corporate TR	0.274	0.000
EUR High Yield TR	3.444	0.000
USD Emerging Market IG & HY	3.507	-0.026

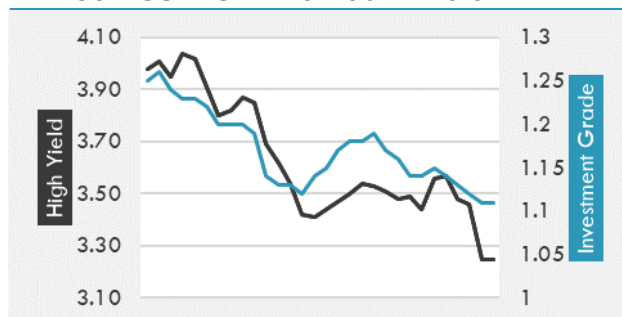
US TREASURIES YIELD CURVE

EUR GENERIC YIELD CURVE


- Treasuries pared their losses after the second of Monday's two coupon auctions, leaving yields cheaper by less than 1bp.
- Italian bonds rise, outperform euro-area peers as stocks jump after U.S. President Donald Trump signs a pandemic relief package. U.K. markets are closed for a holiday.
- Bunds edge higher, outperform Treasuries 3bps.

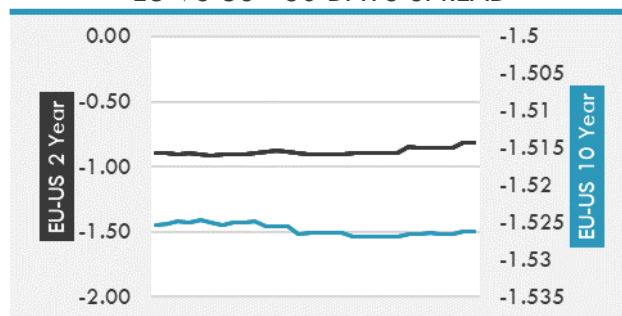
Source: Bloomberg, Financial Times, Economic times, Reuters

OVERNIGHT RATES - SWAPS

	Yield	ΔYield (in Bps)
3M USD LIBOR	0.240	0.000
3M EUR EURIBOR	-0.542	0.000
3M GBP LIBOR	0.025	0.000
3Y USD SWAP	0.251	0.001
5Y USD SWAP	0.442	-0.006
10Y USD SWAP	0.940	0.004
30Y USD SWAP	1.416	0.009

USD CORPORATES - 30 DAYS SPREAD

FIXED INCOME SPREADS

	Spread	ΔSpread (in Bps)
USD 3M vs 10Y Spread	0.832	-0.005
USD 2Y vs 10Y Spread	0.798	-0.002
USD IG Spread	1.110	-0.010
USD HY Spread	3.250	-0.210
EU vs US 10Y Spread	-1.501	0.015
EU vs US 2Y Spread	-0.816	0.040
EM vs Benchmark Spread	267.200	-0.600

EU VS US - 30 DAYS SPREAD


GLOBAL COMMODITIES MARKET

	Last Price	Daily %
Commodity Index	76.38	-0.16%

Energy

WTI Crude Future	47.96	0.71%
Brent Crude Future	51.19	0.65%
NYMEX Gasoline	137	0.17%
NYMEX Heat Oil	148.43	0.36%
ICE Gasoil	425.25	-0.35%
NYMEX Natural Gas	2.313	0.35%

Precious Metals

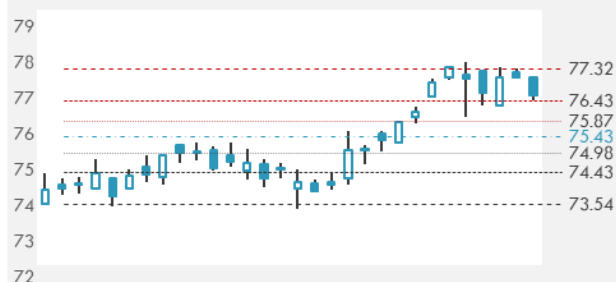
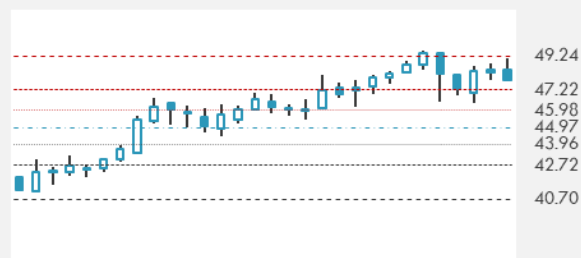
Gold Spot \$/Oz	1876.69	0.16%
Silver Spot \$/Oz	26.2368	-0.03%
Platinum Spot \$/Oz	1042.92	0.84%
Palladium Spot \$/Oz	2357.75	0.82%
Gold Future	1880.7	0.02%
Silver Future	26.38	-0.60%
Platinum Future	1050.4	0.12%
Palladium Future	2359.5	0.33%

Base Metals

LME Aluminum	2030	0.00%
LME Copper	7788	0.00%
LME Zinc	2843	0.00%
LME Nickel	16993	0.00%
LME Lead	1971	0.00%
LME Tin	20185	0.00%

Agricultural

Corn CBT	454.5	-0.44%
Wheat CBT	613.75	-0.08%
Soybeans CBT	1251.25	-0.48%
Bean Meal CBT	411.3	-0.34%
Rough Rice CBT	12.345	0.37%
MDE Palm Oil	3516	-0.73%
Soybean CBT	40.77	-0.68%
Coffee ICE	123.35	0.00%
Sugar #11 ICE	14.98	0.00%
Cotton #2 ICE	76.81	0.60%
Cocoa ICE	2560	0.00%
Ethanol CME	1.49	0.00%
Lumber CME	775	0.00%
Orange Juice ICE	122.2	0.00%
Live Cattle CME	115.775	0.00%
Feeder Cattle CME	142.6	0.00%
Lean Hogs CME	66.5	0.00%

COMMODITY INDEX SUPPORT & RESISTANCE

WTI OIL 30 DAYS SUPPORT & RESISTANCE


- Oil pushed higher with support from a weakening dollar as investors weighed a worsening short-term demand outlook against an eventual rebound as Covid-19 vaccines are rolled out.
- Gold ticked higher after the U.S. House passed a bill to boost household checks to \$2,000.

Source: Bloomberg, Reuters

GOLD 30 DAYS SUPPORT & RESISTANCE

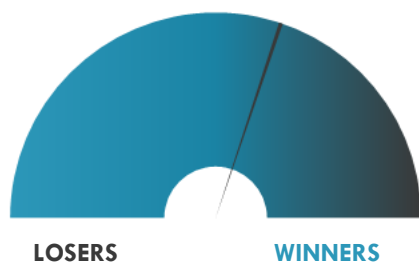
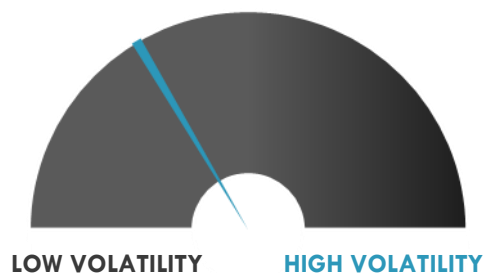
SILVER 30 DAYS SUPPORT & RESISTANCE


TOP 10 WINNERS

	Ticker	Last Price	Daily %
S&P 500 Stocks			
Ultra Beauty Inc	ULTA	278.17	+5.11%
DXC Technology Co	DXC	24.06	+5.07%
Cintas Corp	CTAS	354.19	+4.67%
Live Nation Entertain.	LYV	74.68	+4.24%
Carnival Corp	CCL	21.71	+4.17%
Ross Stores Inc	ROST	122.62	+3.90%
Norwegian Cruise Line	NCLH	25.53	+3.86%
Facebook Inc	FB	277	+3.59%
Apple Inc	AAPL	136.69	+3.58%
Amazon.com Inc	AMZN	3283.96	+3.51%

TOP 10 LOSERS

	Ticker	Last Price	Daily %
S&P 500 Stocks			
Etsy Inc	ETSY	178.12	-6.41%
Whirlpool Corp	WHR	185.19	-4.15%
Rollins Inc	ROL	38.81	-3.10%
Fortune Brands Home	FBHS	86.4	-3.00%
Hologic Inc	HOLX	72.58	-2.93%
Corteva Inc	CTVA	38.35	-2.91%
Williams Cos Inc/The	WMB	20.14	-2.89%
Cabot Oil & Gas Corp	COG	16.48	-2.72%
Lennar Corp	LEN	78.34	-2.60%
Masco Corp	MAS	55.39	-2.47%

S&P 500 DISTRIBUTION

S&P VOLATILITY INDEX


- AeroCentury's plan to regain compliance with NYSE American listing standards was accepted by NYSE American. The company continues its listing under an extension with a target completion date of March 11, 2022.
- In a regulatory filing, hedge fund Islet Management reveals a 7.44% stake in FuboTV.
- Arcturus Therapeutics is down 35% in after-hours as the company provided the clinical and preclinical data for its COVID-19 vaccine candidate, ARCT-021. Arcturus also announced that the Singapore Health Sciences Authority has signed off its Phase 2 clinical study backed by favorable Phase 1/2 study results, as well as supportive preclinical data.
- Guardion Health Sciences appointed Bret Scholtes as the company's CEO, effective Jan. 6, 2021. Scholtes is a veteran of the nutritional products industry having spent the last 9 years as CEO of Omega Protein, a global nutrition products company which traded on NYSE until it was sold to a strategic buyer in late 2017.
- Epsilon Energy received Board approval for the repurchase of up to 1,193,000 common shares, representing 5% of the company's outstanding shares.
- Travel tech company Sabre is surging after the TSA revealed that 2.4M people moved through checkpoints last weekend, down 50% from the two days after Christmas 2019 but the busiest weekend of air travel since March.
- Regional Health Properties says it's not aware of any undisclosed material change in its business or operations that would account for the 549% surge in its stock price.

KEY ECONOMIC INDICATORS

Country	Event	Surv (M)	Actual	Prior	Time
Austria	Bank Austria Manufacturing PMI	--	--	51.7	11:00
Canada	Bloomberg Nanos Confidence	--	--	54.2	15:00
Ireland	Bank of Ireland Economic Pulse	--	70.2	67	2:01
Latvia	Retail Sales MoM	--	--	0.90%	13:00
Latvia	Retail Trade WDA YoY	--	--	6.40%	13:00
Lithuania	Consumer Confidence Indicator	--	--	-4	9:00
Portugal	Retail Sales YoY	--	--	-0.70%	13:00
Portugal	Retail Sales MoM	--	--	1.50%	13:00
United States	S&P CoreLogic CS 20-City MoM SA	1.00%	--	1.27%	16:00
United States	S&P CoreLogic CS 20-City YoY NSA	6.95%	--	6.57%	16:00
United States	S&P CoreLogic CS 20-City NSA Index	--	--	232.53	16:00
United States	S&P CoreLogic CS US HPI YoY NSA	--	--	6.96%	16:00
United States	S&P CoreLogic CS US HPI NSA Index	--	--	226.8	16:00

Source: Bloomberg

Banque BEMO sal

Head Office - Private and Corporate Banking

Elias Sarkis Ave., Bemo Bldg , Ashrafieh - Lebanon
Tel: +961 1 200 505 Fax: +961 1 217 860

Research & Development research@bemobank.com

Elias Sarkis Ave., Bemo Bldg , Ashrafieh - Lebanon
Tel: +961 1 200 505 Fax: +961 1 217 860

Disclaimer:

This report is published for information purposes only. The information herein has been compiled from, or based upon sources considered to be reliable (Bloomberg, SeekingAlpha, DailyStar...), but we do not guarantee or assume responsibility for its completeness and accuracy. This document should not be construed as a solicitation to take part in any investment, or as constituting any representation or warranty on our part. This report is not to be relied upon in substitution for the exercise of specialists.

We may not have taken any steps to ensure that the securities referred to in this report are suitable for any particular investor. The investments and services contained or referred to herein are not purported to be exhaustive, any person considering an investment should seek specialist advice on the suitability of an investment.

Nothing in this report constitutes investment, legal, accounting or tax advice, or a representation that any investment or strategy is suitable or appropriate to your individual circumstances, or otherwise constitutes a personal recommendation. Clients understand that it is their responsibility to seek legal and/or tax advice regarding the legal and tax consequences of their investment transactions. The consequences of any action taken on the basis of information contained herein are solely the responsibility of the recipient.

Investment instruments are subject to risk, including possible loss of principal amount invested. Past performance should not be taken as an indication or guarantee of future performance, and no representation or warranty, express or implied, is made regarding future performance. The value of securities and financial instruments is subject to exchange rate fluctuation that may have a positive or adverse effect on the price or income of such securities or financial instruments. Some investments mentioned in this report may have a high level of volatility. High volatility investments may experience sudden and large falls in their value causing losses when that investment is realized. Some investments may not be readily realizable and it may be difficult to sell or realize those investments, similarly it may prove difficult to obtain reliable information about the value, or risks, to which such an investment is exposed.

This report may provide the addresses of websites or references. We have not reviewed any such site and takes no responsibility for the content contained therein. Such address or reference is provided solely for convenience and information. Accessing such website through this report shall be at the recipients own risk.