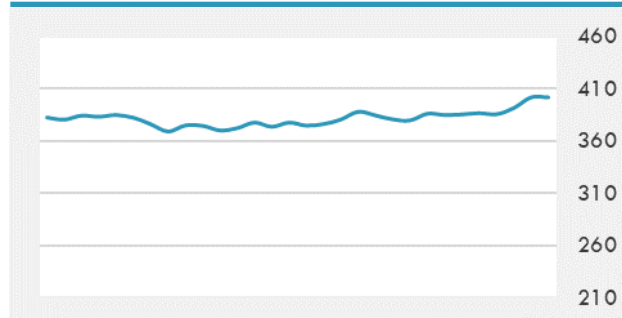
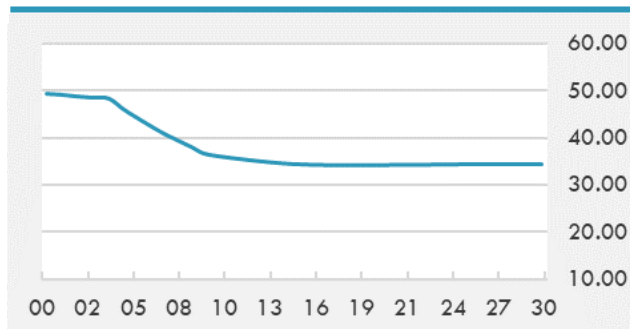


BEIRUT STOCK EXCHANGE

	Last	Daily %	YTD %	Dividend %
MSCI Lebanon	401.56	2.61%	48.92%	
Development and Reconstruction				
Solidere A	16.98	2.97%	132.60%	
Solidere B	16.75	1.52%	129.77%	
Banking				
Audi Listed	1.22	0.00%	-65.14%	
BLC Listed	0.93	0.00%	0.00%	
BOB Listed	17.8	0.00%	-5.32%	
Byblos Listed	0.52	0.00%	-48.00%	
BEMO Listed	1.2	0.00%	4.35%	
BLOM Listed	2.07	0.00%	-70.72%	
Trading				
RYMCO	3.19	0.00%	-2.74%	
Industrial				
Holcim	13.65	0.00%	40.00%	
Ciments Blancs	4	0.00%	53.85%	

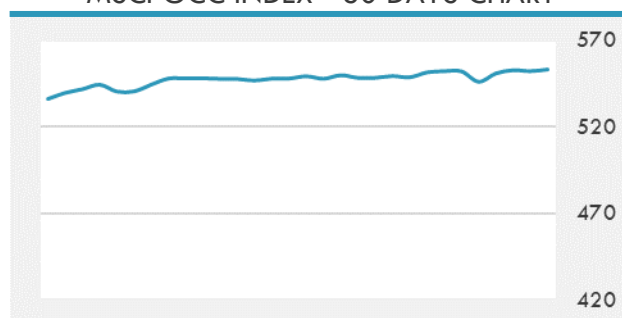
MSCI LEBANON INDEX - 30 DAYS CHART

LEBANESE USD SOVEREIGN CURVE


- The Tadawul All Share Index edged higher by 0.44% on Sunday to reach the level of 8,740.66 points.
- Saudi Arabia's Minister of Energy, Prince Abdulaziz bin Salman bin Abdulaziz, on Sunday said that Saudi Aramco has discovered four new oil and gas fields in the kingdom, state-run Saudi Press Agency reported.
- The UAE stock markets have witnessed a downward performance by the end of Sunday's trading session.

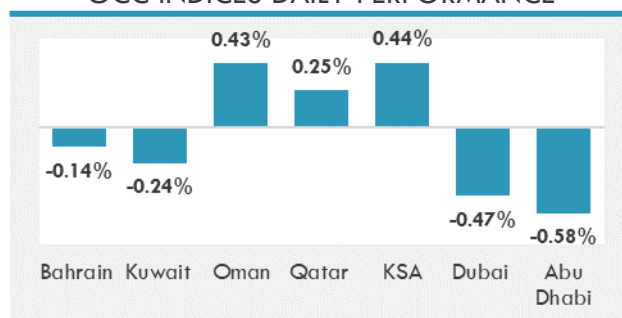
Source: Daily Star, Gulf Business, Mubasher, Bloomberg, Businessnews LB

GCC EQUITY INDICES

	Last Price	Daily %	YTD %
Bahrain	1492.91	-0.14%	-7.20%
Kuwait	5569.39	-0.24%	-11.51%
Oman	3615.18	0.43%	-9.19%
Qatar	10564.33	0.25%	1.33%
KSA	8740.66	0.44%	4.19%
Dubai	2515.67	-0.47%	-8.85%
Abu Dhabi	5095.95	-0.58%	0.43%

MSCI GCC INDEX - 30 DAYS CHART

LOCAL/GCC FOREIGN EXCHANGE

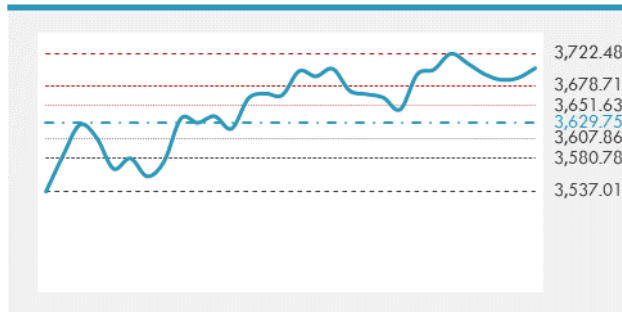
	Cross	Last Price
Lebanese Pound Spot	USD/LBP	1515.5
Bahraini Dinar Spot	USD/BHD	0.37704
Kuwaiti Dinar Spot	USD/KWD	0.3036
Omani Rial Spot	USD/OMR	0.385
Qatari Riyal Spot	USD/QAR	3.6414
Saudi Riyal Spot	USD/SAR	3.7532
UAE Dirham Spot	USD/AED	3.6729

GCC INDICES DAILY PERFORMANCE


UNITED STATES EQUITY MARKET INDICES

	Last Price	Daily %	YTD %	Δ10D Vol
Major Indices				
Dow Jones	30199.87	0.00%	5.82%	0.03%
S&P 500	3703.06	0.00%	14.62%	0.03%
Nasdaq	12804.73	0.00%	42.71%	-0.64%
Sectors Indices				
Discretionary	1277.28	0.00%	29.50%	-0.25%
Staples	687.75	0.00%	6.30%	0.15%
Energy	287.38	0.00%	-37.04%	-0.09%
Financials	481.31	0.00%	-5.88%	-1.15%
Healthcare	1299.88	0.00%	9.40%	-0.12%
Industrials	744.1	0.00%	8.22%	-0.08%
IT	2270.6	0.00%	40.93%	-0.34%
Materials	450.45	0.00%	16.74%	-0.16%
Com. Services	217.7	0.00%	19.85%	-2.46%
Utilities	311.3	0.00%	-5.20%	0.59%
Real Estate	223.92	0.00%	-6.82%	0.69%

S&P 500 INDEX - 30 DAYS CHART

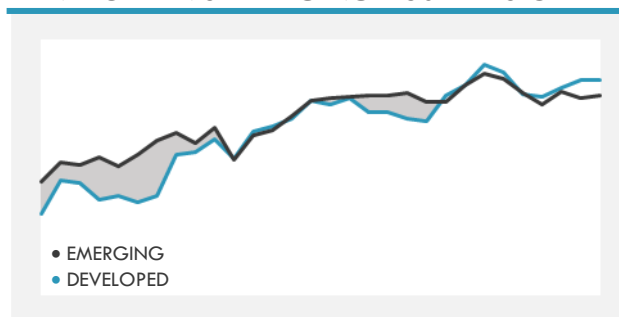
S&P 500 SUPPORT & RESISTANCE


- The S&P 500 rose last Thursday amid light trading with the U.S. stock market set to close early before the Christmas holiday. Volume was more than 45% below the 30-day average.
- Last Thursday, U.K. stocks closed higher in a shortened session ahead of the Christmas holiday, as an imminent Brexit trade deal tempered worries about rising coronavirus cases.
- Asian stocks rose after capping their first weekly drop in two months Friday, with investor sentiment buoyed by U.S. President Donald Trump's signing of a coronavirus stimulus package.

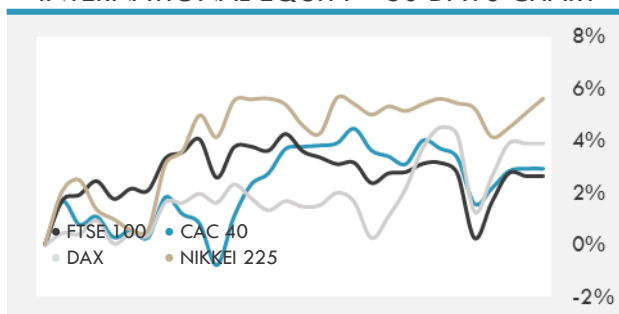
Source: Bloomberg, Financial Times, Reuters

INTERNATIONAL MARKETS INDICES

	Last Price	Daily %	YTD %	Δ10D Vol
World	1557	0.03%	12.71%	-0.16%
Developed	2659.27	0.01%	12.74%	-0.22%
Emerging	1255.2	0.13%	12.46%	0.12%
Frontier	2576.27	0.06%	-6.46%	-0.26%
Europe	131.14	0.00%	-6.06%	-0.72%
Latin America	2425.11	0.00%	-16.88%	-0.07%
Asia Pacific	194.83	0.12%	14.03%	-0.15%

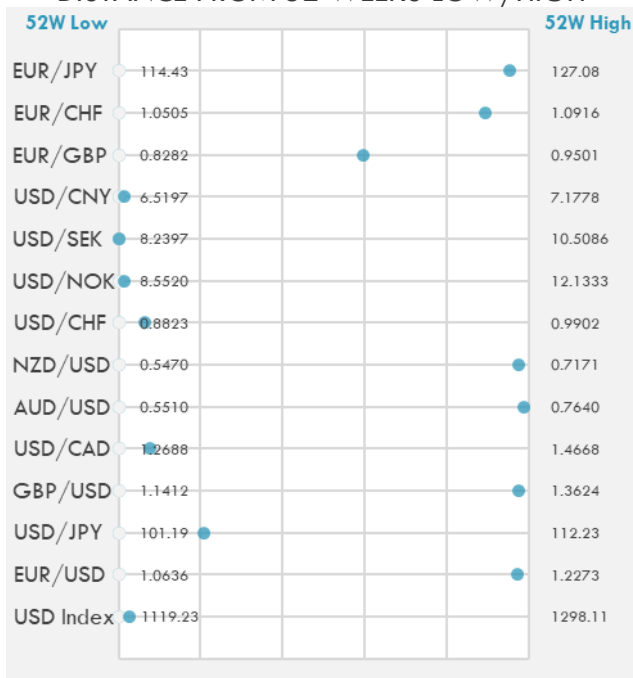
DEVELOPED VS EMERGING - 30 DAYS CHART

INTERNATIONAL EQUITY INDICES

	Last Price	Daily %	YTD %	Δ10D Vol
EuroStoxx 50	3543.28	0.00%	-5.39%	-1.07%
FTSE 100	6502.11	0.00%	-13.79%	-0.52%
CAC 40	5522.01	0.00%	-7.63%	-0.51%
DAX	13587.23	0.00%	2.55%	0.00%
Swiss SMI	10411.92	0.00%	-1.93%	0.00%
Nikkei 225	26810.76	0.53%	13.33%	0.50%
CSI 300	5071.69	1.43%	23.80%	-1.51%

INTERNATIONAL EQUITY - 30 DAYS CHART


FOREIGN EXCHANGE MARKET

	Last Price	Daily %	Δ10D	Vol 25	ΔRR
Major USD Cross Rate					
USD Index	1123.97	-0.23%	0.05%	-	
EUR/USD	1.2226	0.32%	0.01%	-0.235	
USD/JPY	103.48	-0.16%	-0.34%	-0.438	
GBP/USD	1.3571	0.10%	-1.60%	-1.338	
USD/CAD	1.2841	-0.17%	-0.76%	0.230	
AUD/USD	0.7613	0.21%	-0.11%	-0.700	
NZD/USD	0.7128	0.34%	0.04%	-0.645	
USD/CHF	0.8893	-0.20%	-0.67%	-0.005	
USD/NOK	8.6038	-0.67%	-0.41%	1.023	
USD/SEK	8.2441	-0.18%	0.28%	0.525	
USD/CNY	6.5289	-0.02%	0.31%	0.300	
Major EUR Cross Rate					
EUR/GBP	0.90086	0.09%	-1.86%	1.110	
EUR/CHF	1.08724	0.16%	-0.23%	0.343	
EUR/JPY	126.51	0.14%	-0.58%	-0.403	

DISTANCE FROM 52 WEEKS LOW/HIGH


- A gauge of the dollar's strength fell along with Treasuries after U.S. President Donald Trump signed a coronavirus relief package, buoying demand for risk assets.
- Most Emerging Asian currencies advanced as the dollar weakened after President Donald Trump signed a bill including pandemic relief.
- Australian dollar extends its decline after posting the first weekly drop in eight weeks.

Source: Bloomberg, Financial Times, Reuters

EUR/USD 30 DAYS SUPPORT & RESISTANCE

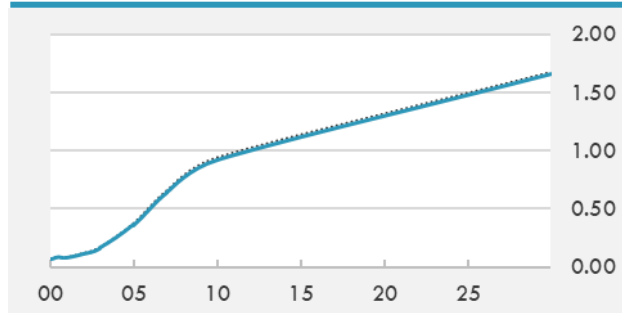
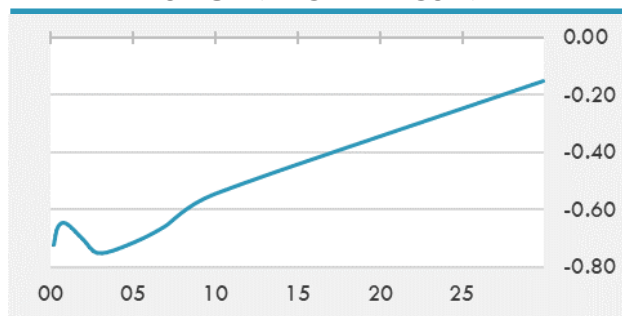
GBP/USD 30 DAYS SUPPORT & RESISTANCE

USD/JPY 30 DAYS SUPPORT & RESISTANCE

USD/CAD 30 DAYS SUPPORT & RESISTANCE


GLOBAL BOND INDICES

	Yield	ΔYield (in Bps)
Benchmark Indices		
US 10 Years Benchmark	0.9231	-0.020
EU 10 Years Benchmark	-0.548	-0.001
UK 10 Years Benchmark	0.257	-0.029
Sovereign Bonds		
US Treasury Bond	0.581	-0.008
Eurozone Sovereign Bond	-0.401	0
Japan Sovereign Bond	-0.105	0.004
Corporate Bonds		
US Corporate TR	1.796	-0.017
US High Yield Bond TR	4.378	-0.038
EUR Aggregate Corporate TR	0.274	-0.001
EUR High Yield TR	3.444	0.009
USD Emerging Market IG & HY	3.533	-0.004

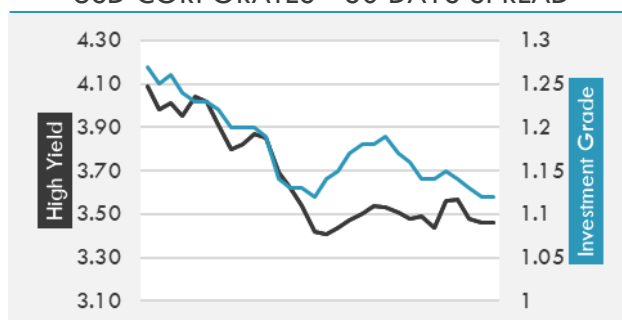
US TREASURIES YIELD CURVE

EUR GENERIC YIELD CURVE


- Treasuries fall as Trump's signing of the U.S. virus aid bill fans optimism for a faster economic recovery and damps demand for haven assets. U.S. 2-year yield steady at 0.12%, 10-year yield up 2bps at 0.95%.
- Japan's bonds are little changed across the curve before the nation's central bank releases its January debt purchase plan at 5pm Tokyo time.
- Australian and New Zealand debt markets are shut.

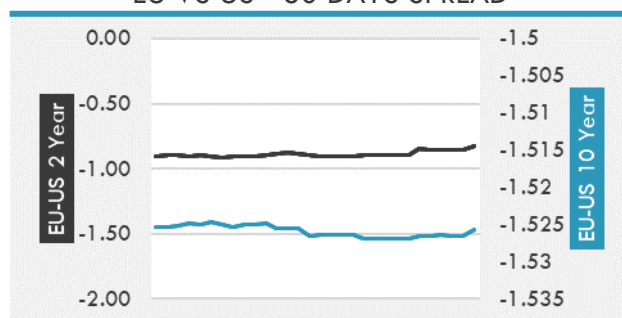
Source: Bloomberg, Financial Times, Economic times, Reuters

OVERNIGHT RATES - SWAPS

	Yield	ΔYield (in Bps)
3M USD LIBOR	0.240	-0.011
3M EUR EURIBOR	-0.542	-0.001
3M GBP LIBOR	0.025	0.002
3Y USD SWAP	0.250	-0.004
5Y USD SWAP	0.447	-0.003
10Y USD SWAP	0.936	-0.015
30Y USD SWAP	1.407	-0.018

USD CORPORATES - 30 DAYS SPREAD

FIXED INCOME SPREADS

	Spread	ΔSpread (in Bps)
USD 3M vs 10Y Spread	0.837	-0.022
USD 2Y vs 10Y Spread	0.800	-0.018
USD IG Spread	1.120	-0.010
USD HY Spread	3.460	-0.020
EU vs US 10Y Spread	-1.516	0.000
EU vs US 2Y Spread	-0.856	0.000
EM vs Benchmark Spread	267.800	0.400

EU VS US - 30 DAYS SPREAD


GLOBAL COMMODITIES MARKET

	Last Price	Daily %
Commodity Index	76.83	-0.26%

Energy

WTI Crude Future	47.96	-0.56%
Brent Crude Future	51.08	-0.41%
NYMEX Gasoline	137.35	-0.39%
NYMEX Heat Oil	148.65	-0.23%
ICE Gasoil	424.25	0.18%
NYMEX Natural Gas	2.291	-9.02%

Precious Metals

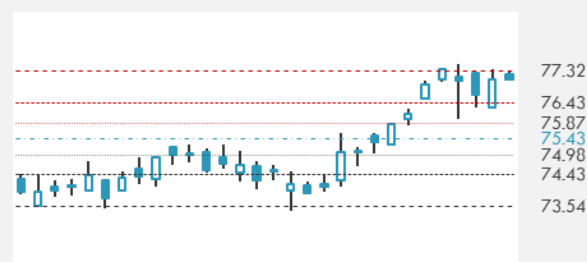
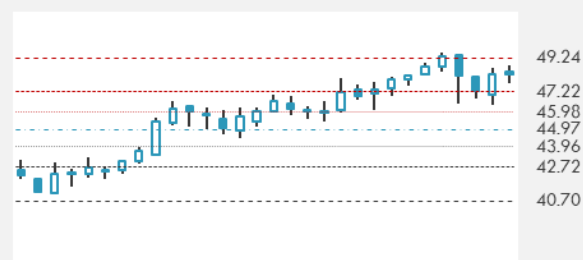
Gold Spot \$/Oz	1888.91	0.29%
Silver Spot \$/Oz	26.4403	2.36%
Platinum Spot \$/Oz	1039.24	1.29%
Palladium Spot \$/Oz	2359.17	0.62%
Gold Future	1893.1	0.53%
Silver Future	26.65	2.86%
Platinum Future	1047.5	1.21%
Palladium Future	2361	0.64%

Base Metals

LME Aluminum	2030	0.00%
LME Copper	7788	0.00%
LME Zinc	2843	0.00%
LME Nickel	16993	0.00%
LME Lead	1971	0.00%
LME Tin	20185	0.00%

Agricultural

Corn CBT	454	0.67%
Wheat CBT	627.75	0.12%
Soybeans CBT	1270.25	0.45%
Bean Meal CBT	418.9	1.16%
Rough Rice CBT	12.505	0.48%
MDE Palm Oil	3548	-0.59%
Soybean CBT	40.91	-0.53%
Coffee ICE	125.95	0.00%
Sugar #11 ICE	14.9	0.00%
Cotton #2 ICE	76.2	0.00%
Cocoa ICE	2593	0.00%
Ethanol CME	1.45	0.00%
Lumber CME	783.8	0.00%
Orange Juice ICE	121.7	0.00%
Live Cattle CME	114.975	0.00%
Feeder Cattle CME	142.325	0.00%
Lean Hogs CME	66.95	0.00%

COMMODITY INDEX SUPPORT & RESISTANCE

WTI OIL 30 DAYS SUPPORT & RESISTANCE


- Oil fell in Asian trading as pessimism over a new strain of Covid-19 that's threatening more travel restrictions outweighed the passage of a U.S. stimulus bill into law.
- Gold headed for the highest close in seven weeks after President Donald Trump signed a \$900 billion coronavirus stimulus package.

Source: Bloomberg, Reuters

GOLD 30 DAYS SUPPORT & RESISTANCE

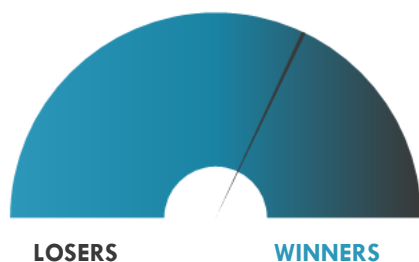
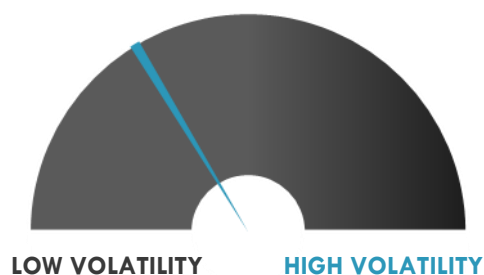
SILVER 30 DAYS SUPPORT & RESISTANCE


TOP 10 WINNERS

	Ticker	Last Price	Daily %
S&P 500 Stocks			
Fidelity National Info.	FIS	140.79	+4.51%
Global Payments Inc	GPN	205.55	+2.64%
KLA Corp	KLAC	259.08	+2.49%
Tesla Inc	TSLA	661.77	+2.44%
Lennar Corp	LEN	80.43	+2.37%
Mastercard Inc	MA	336	+2.06%
PulteGroup Inc	PHM	45.2	+2.05%
Equity Residential	EQR	58.2	+1.98%
Teleflex Inc	TFX	405.06	+1.96%
Lam Research Corp	LRCX	480.34	+1.95%

TOP 10 LOSERS

	Ticker	Last Price	Daily %
S&P 500 Stocks			
Altria Group Inc	MO	41.72	-2.68%
Marathon Oil Corp	MRO	6.63	-2.64%
Apache Corp	APA	14.43	-2.37%
Devon Energy Corp	DVN	15.33	-2.11%
General Motors Co	GM	41.58	-2.05%
eBay Inc	EBAY	50.12	-1.98%
General Electric Co	GE	10.65	-1.93%
United Airlines	UAL	43.26	-1.93%
Domino's Pizza Inc	DPZ	396.73	-1.74%
Wells Fargo & Co	WFC	29.84	-1.68%

S&P 500 DISTRIBUTION

S&P VOLATILITY INDEX


- Borr Drilling said it is working with its creditors to strengthen its liquidity profile, devising a liquidity improvement plan totaling \$925M over the next two years, which includes deferred maturities for various facilities.
- PRGX Global entered into a definitive agreement for Ardian to acquire PRGX, led by Ardian's North America Direct Buyouts team, in an all-cash transaction is valued at ~\$195M.
- Chairman and CEO of Odonate Therapeutics Kevin Tang bought 275,784 shares of ODT on December 23 at average price of \$15.16 a share.
- Adomani launches \$23M private placement. The transaction is coming via PIPE financing; which is to occur in two separate closings. At the first closing, the company will issue 11.50M shares of common stock at a purchase price of \$0.50/share and warrants of 8.63M shares of common stock at an exercise price of \$0.50/share for gross proceeds of \$5.75M.
- SolarWinds, the IT management company at the heart of the Russia-linked hacking of U.S. agencies, has rolled out more fixes for supported and unsupported versions of its Orion Platform products.
- Taronis Fuels said that Mary Pat Thompson, Chief Financial Officer, Treasurer, and a member of the company's board was suspended indefinitely from her positions as CFO and Treasurer "pending the resolution of a currently ongoing investigation into multiple alleged breaches of her fiduciary duties to the Company and its stockholders and violations of her obligations as an officer and director of the Company."

KEY ECONOMIC INDICATORS

Country	Event	Surv (M)	Actual	Prior	Time
Finland	Business Confidence	--	-5	-14	8:00
Finland	Consumer Confidence	--	-4.6	-4.8	8:00
Germany	Retail Sales MoM	-2.00%	--	2.60%	
Germany	Retail Sales NSA YoY	4.00%	--	8.20%	
Japan	Industrial Production MoM	1.10%	0.00%	4.00%	1:50
Japan	Industrial Production YoY	-2.30%	-3.40%	-3.00%	1:50
Japan	BOJ Summary of Opinions				1:50
Lithuania	Retail Sales WDA YoY	--	--	8.50%	9:00
Lithuania	Retail Sales SA MoM	--	--	1.30%	9:00
Netherlands	Producer Confidence Index	--	-0.4	-3.8	7:30
Slovakia	Consumer Confidence	--	--	-34.6	10:00
Slovakia	Industrial Confidence	--	--	7	10:00
Spain	Retail Sales YoY	-5.30%	--	-2.40%	10:00
Spain	Retail Sales SA YoY	-4.00%	--	-2.70%	10:00
United States	Dallas Fed Manf. Activity	10.2	--	12	17:30

Source: Bloomberg

Banque BEMO sal

Head Office - Private and Corporate Banking

Elias Sarkis Ave., Bemo Bldg , Ashrafieh - Lebanon
Tel: +961 1 200 505 Fax: +961 1 217 860

Research & Development research@bemobank.com

Elias Sarkis Ave., Bemo Bldg , Ashrafieh - Lebanon
Tel: +961 1 200 505 Fax: +961 1 217 860

Disclaimer:

This report is published for information purposes only. The information herein has been compiled from, or based upon sources considered to be reliable (Bloomberg, SeekingAlpha, DailyStar...), but we do not guarantee or assume responsibility for its completeness and accuracy. This document should not be construed as a solicitation to take part in any investment, or as constituting any representation or warranty on our part. This report is not to be relied upon in substitution for the exercise of specialists.

We may not have taken any steps to ensure that the securities referred to in this report are suitable for any particular investor. The investments and services contained or referred to herein are not purported to be exhaustive, any person considering an investment should seek specialist advice on the suitability of an investment.

Nothing in this report constitutes investment, legal, accounting or tax advice, or a representation that any investment or strategy is suitable or appropriate to your individual circumstances, or otherwise constitutes a personal recommendation. Clients understand that it is their responsibility to seek legal and/or tax advice regarding the legal and tax consequences of their investment transactions. The consequences of any action taken on the basis of information contained herein are solely the responsibility of the recipient.

Investment instruments are subject to risk, including possible loss of principal amount invested. Past performance should not be taken as an indication or guarantee of future performance, and no representation or warranty, express or implied, is made regarding future performance. The value of securities and financial instruments is subject to exchange rate fluctuation that may have a positive or adverse effect on the price or income of such securities or financial instruments. Some investments mentioned in this report may have a high level of volatility. High volatility investments may experience sudden and large falls in their value causing losses when that investment is realized. Some investments may not be readily realizable and it may be difficult to sell or realize those investments, similarly it may prove difficult to obtain reliable information about the value, or risks, to which such an investment is exposed.

This report may provide the addresses of websites or references. We have not reviewed any such site and takes no responsibility for the content contained therein. Such address or reference is provided solely for convenience and information. Accessing such website through this report shall be at the recipients own risk.